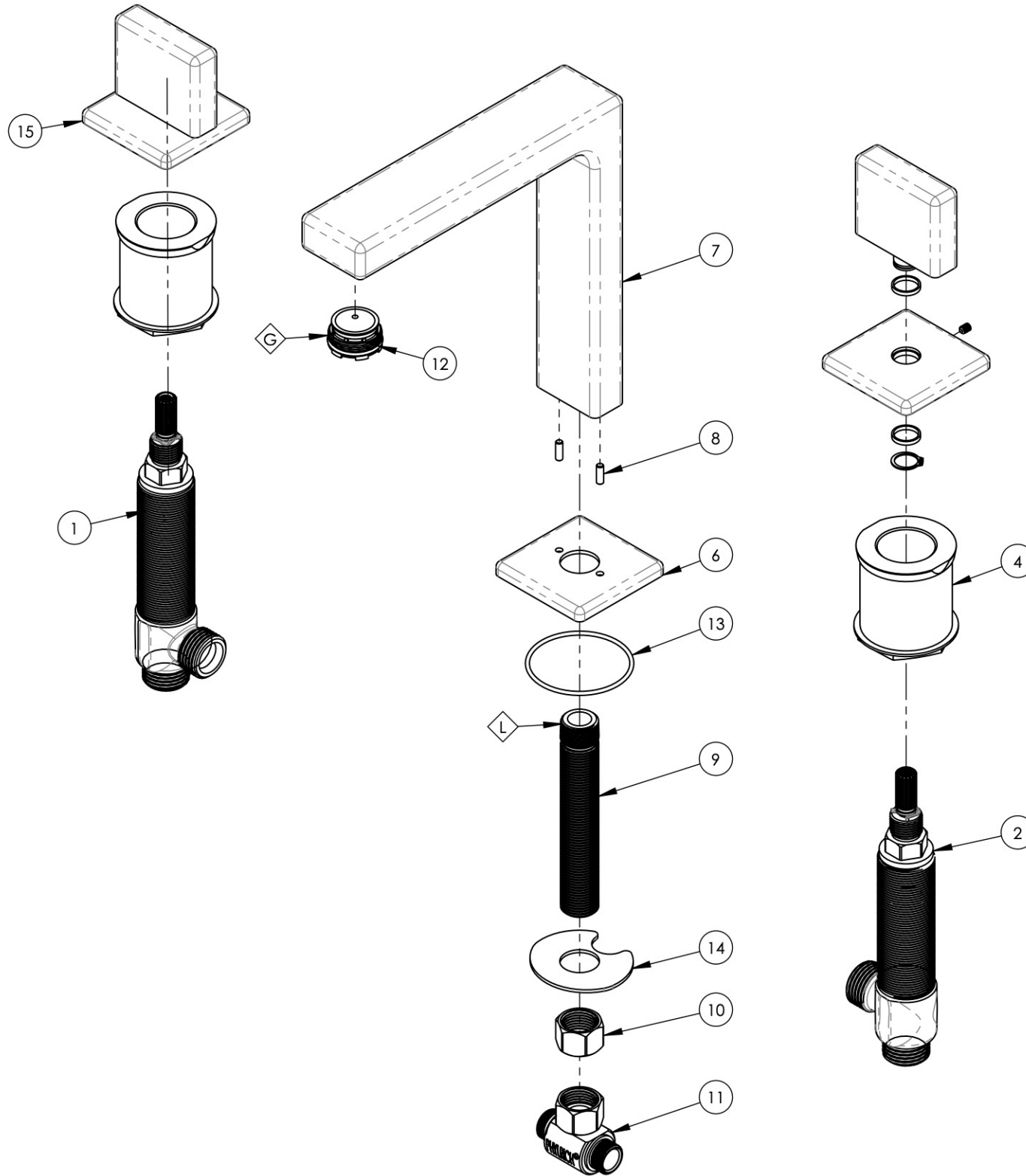
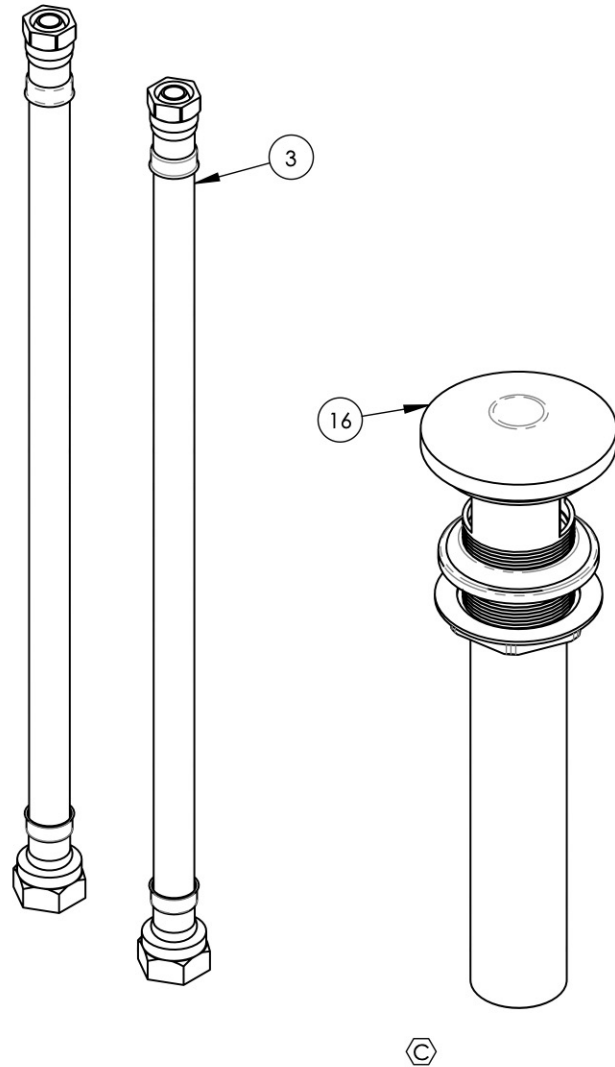


- NOTE(S):  
 1. PART NUMBER, "/00" DENOTES PART SHALL HAVE FINISH.  
 2. APPLY NSF COMPLIANT GREASE TO ANY O-RING, SEALING JOINTS, AND/OR PIVOTAL POINTS.  
 3. APPLY NSF COMPLIANT LOCTITE TO THREADED AREA.



ITEM NO.	PART NUMBER	DESCRIPTION	QTY.
1	1-149	WIDESPREAD VALVE LAV 16PT, HOT, ONLY	1
2	1-150	WIDESPREAD VALVE LAV 16PT, COLD, ONLY	1
3	10982	HOSE, 3/8" COMP. X 1/2" NPSM - 12'L	2
4	2-092	RECESSED MOUNTING KIT FOR WIDESPREAD	2
5	3-096/00	ASSY, SPOUT WIDESPREAD LAV SOFT HIGH	1
6	10933/00	ESCUTCHEON, SPOUT LAV MIX SERIES	1
7	10943/00	SPOUT, WIDESPREAD LAV HIGH MIX	1
8	92158	DOWEL PIN, 1/8" X 3/8"L	2
9	10745	THREAD ALL, 3/8"-18 NPSL - 3/8"NPT	1
10	10746	NUT, 3/8"-18 NPSL	1
11	1-112	TEE VALVE, 3/8" NPSM X 3/8" COMPRESSION	1
12	11427	AERATOR, CACHE REG, PINK 1.2 GPM, M24X1.0, NEOPERL # 40.2360.010	1
13	90031	O-RING, 1-3/4"ID X 1/16"THK, AS-568-031	1
14	92174	WASHER MOUNT WIDESPREAD (3/8")	1
15	3-101/00	ASSY, HANDLE BLADE MIX	2
16	3-517/00	PUSH TO CLOSE DRAIN	1

ALL	C	NEW TEMPLATE, PUSH TO CLOSE DRAIN, UPDATE DWG NAME	11/12/2019	AMM
ZONE	REV.	DESCRIPTION	DATE	APPROVED
REVISIONS				
		1261 LOGAN AVENUE COSTA MESA, CALIFORNIA 92626 PHONE: 714.361.4800 FAX: 714.617.3120	<b>PHYLIRICH</b> Defining Luxury Since 1959	
		<b>PROPRIETARY AND CONFIDENTIAL</b> THE INFORMATION CONTAINED IN THIS DRAWING IS THE SOLE PROPERTY OF PHYLIRICH. ANY REPRODUCTION IN PART OR AS A WHOLE WITHOUT THE WRITTEN PERMISSION OF PHYLIRICH IS PROHIBITED.		

NEXT ASSY	USED ON	FRACTIONS	DECIMALS	ANGULAR
-	-	±1/16"	X.X: ±.1 X.XX: ±.01 X.XXX: ±.005	±2°
APPLICATION		NAME	DATE	
MATERIAL		MAF	8/5/2015	
FINISH		GRE		

WIDESPREAD LAV, HIGH SPOUT W/ BLADE, MIX		
SIZE	ASM/PRT NO.	REV
<b>B</b>	290-01/00	<b>C</b>
SCALE: 1:2.5	WEIGHT: lbs.	SHEET 1 OF 2

DO NOT SCALE DRAWING