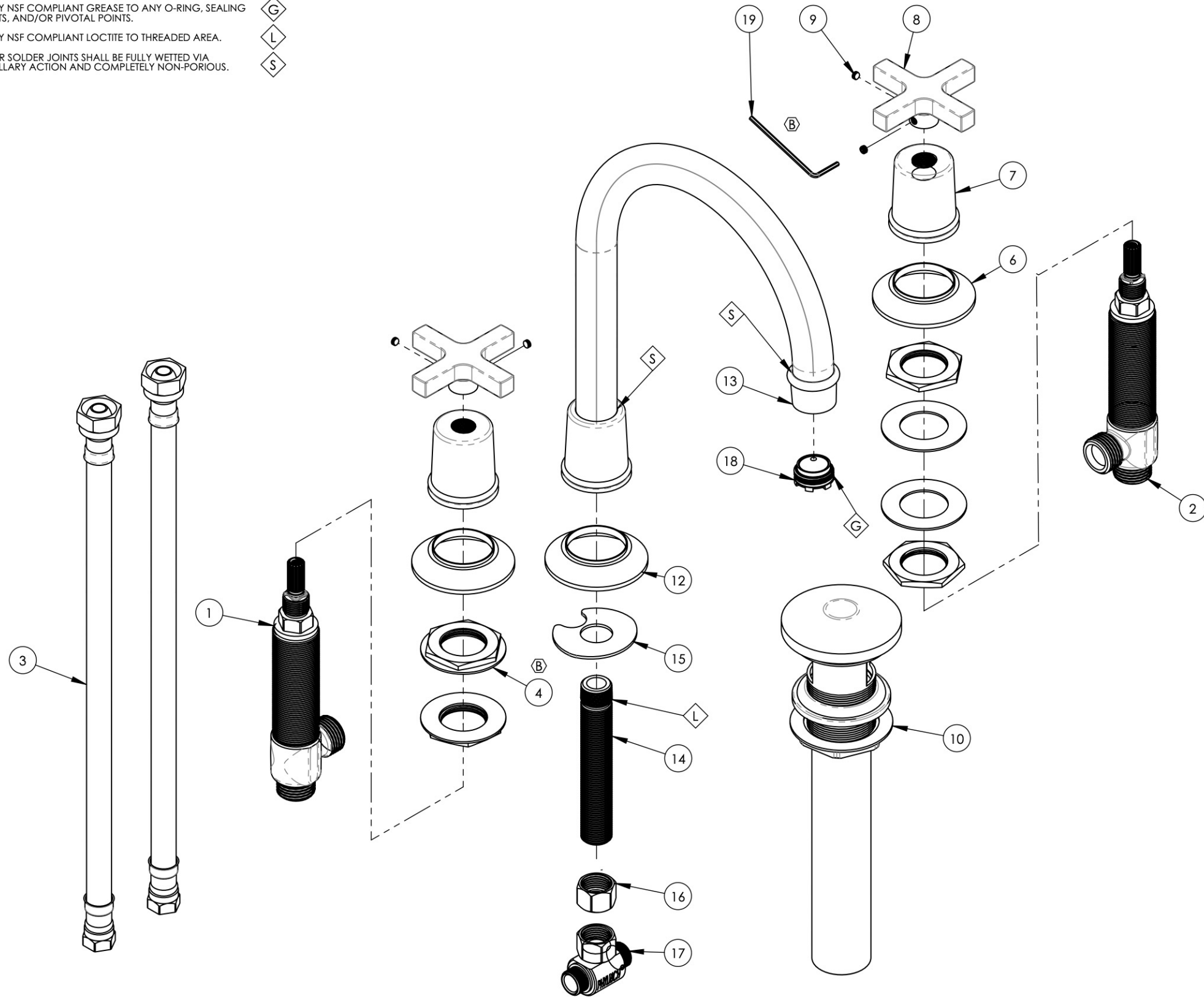


NOTE(S):

- 1. PART NUMBER, "/00" DENOTES PART SHALL HAVE FINISH.
- 2. APPLY NSF COMPLIANT GREASE TO ANY O-RING, SEALING JOINTS, AND/OR PIVOTAL POINTS.
- 3. APPLY NSF COMPLIANT LOCTITE TO THREADED AREA.
- 4. SILVER SOLDER JOINTS SHALL BE FULLY WETTED VIA CAPILLARY ACTION AND COMPLETELY NON-PORIOUS.



ITEM NO.	PART NUMBER	DESCRIPTION	QTY.
1	1-149	WIDESPREAD VALVE LAV 16PT, HOT, ONLY	1
2	1-150	WIDESPREAD VALVE LAV 16PT, COLD, ONLY	1
3	10982	HOSE, 3/8" COMP. X 1/2" NPSM - 12"L	2
4	2-203	MOUNTING NUT KIT, WIDESPREAD LAV	4
5	3-132/00	CROSS HANDLE, HEX MODERN, 501 SERIES	2
6	10921/00	ESCUTCHEON, TRANSITIONAL	1
7	10922/00	HUB, FOR HEX TRANSITIONAL	1
8	10633/00	HANDLE CROSS, CONTEMPORARY 16PT	1
9	92163	SET SCREW, CONE PT 8-32 X 1/8"L	2
10	3-517/00	PUSH TO CLOSE DRAIN	1
11	3-553/00	ARC SPOUT LAV W/ HARDWARE, HEX MODERN	1
12	10921/00	ESCUTCHEON, TRANSITIONAL	1
13	2-279/00	ASSY, ARC SPOUT, WIDESPREAD, BRAZE, HEX MODERN	1
14	10745	THREAD ALL, 3/8"-18 NPSL - 3/8"NPT	1
15	92174	WASHER MOUNT WIDESPREAD (3/8")	1
16	10746	NUT, 3/8"-18 NPSL	1
17	1-112	TEE VALVE, 3/8" NPSM X 3/8" COMPRESSION	1
18	11429	AERATOR CACHE JUNIOR, 1.2GPM, M21.5X1.0, NEOPERL # 42.2260.450	1
19	P39001	HEX KEY 5/64, FOR 8-32 SET SCREW	1

ALL	B	UPDATE DWG NAME, ADD HEX KEY, ADD MOUNTING NUT SUB ASSY	11/27/2019	AMM
ZONE	REV.	DESCRIPTION	DATE	APPROVED
REVISIONS				
1261 LOGAN AVENUE COSTA MESA, CALIFORNIA 92626 PHONE: 714.361.4800 FAX: 714.617.3120		PHYLIRICH Defining Luxury Since 1959		
PROPRIETARY AND CONFIDENTIAL				
THE INFORMATION CONTAINED IN THIS DRAWING IS THE SOLE PROPERTY OF PHYLIRICH. ANY REPRODUCTION IN PART OR AS A WHOLE WITHOUT THE WRITTEN PERMISSION OF PHYLIRICH IS PROHIBITED.				

INTERPRET GEOMETRIC DIMENSIONING & TOLERANCING IN ACCORDANCE WITH ASME Y14.5-2009 & ASME Y14.41-2003 STANDARDS. UNLESS OTHERWISE SPECIFIED, DIMENSIONS ARE IN INCHES. TOLERANCES ARE:		
FRACTIONS ±1/16"	DECIMALS X.X: ±.1 X.XX: ±.01 X.XXX: ±.005	ANGULAR ±2°
NEXT ASSY	USED ON	APPLICATION
MATERIAL	NAME	DATE
FINISH	DRAWN RAH	8/9/2018
DO NOT SCALE DRAWING	CHECKED	

WIDESPREAD LAV, HIGH ARCH SPOUT W/ CROSS, HEX MODERN		
SIZE B	ASM/PRT NO. 501-03/00	REV B
SCALE: 1:2.5	WEIGHT: lbs.	SHEET 1 OF 2